



**myaamia  
kiilhswaakani**

**2026**

# 2026 myaamia kiilhswaakani

The Myaamia lunar calendar connects the observation of lunar cycles to ecological changes in our environment. Each lunar month is named for an ecological event that is usually observed during that period of time. A lunar month is approximately 29.5 days long. In order to account for the half day, the calendar alternates between months that have 29 days and months with 30 days.

A lunar year is approximately 354 days long, which is eleven days shorter than the solar year. In order stay connected with seasonal ecological changes, the calendar needs to be adjusted approximately every three years by adding a thirteenth moon called waawiita kiilhswa 'lost moon'. The 2026-27 calendar will have thirteen months and begins with waawiita kiilhswa. Because the lunar year is shorter, the Gregorian date for weehki-kihkatwi 'Myaamia New Year' varies, but it always occurs at the beginning of mahkoonsa kiilhswa. With the addition of waawiita kiilhswa, weehki-kihkatwi occurs on February 20th on the Gregorian calendar.

This calendar includes Gregorian dates in the lower lefthand corner of each day so that users can connect the Myaamia lunar calendar to the Gregorian solar calendar.

Some common terms associated with the Myaamia lunar calendar are listed below.

eelaamini-kiišikahki	Sunday	saakiwa kiilhswa	New Moon
nkotakone pooni-kiišikahki	Monday	napale kiilhswa	First Quarter Moon
niišakone pooni-kiišikahki	Tuesday	waawiyiisita	Full Moon
nihokone pooni-kiišikahki	Wednesday	napale neepiki	Last Quarter Moon
niiyakone pooni-kiišikahki	Thursday	myaalisiwa	Waning Crescent
yaalanokone pooni-kiišikahki	Friday	keešaakosita kiilhswa	Waxing Phases
kaakaathsokone pooni-kiišikahki	Saturday	peemineeta kiilhswa	Waning Phases
weehki-kihkatwi	New Year	pahsaahkaahkanka	Solstice

nooŝonke siipionki - Miami, OK

myaamia mihši-nipwaantiikaaninki - Miami University

kiihkayonki - Fort Wayne, IN

©2026 Miami Tribe of Oklahoma

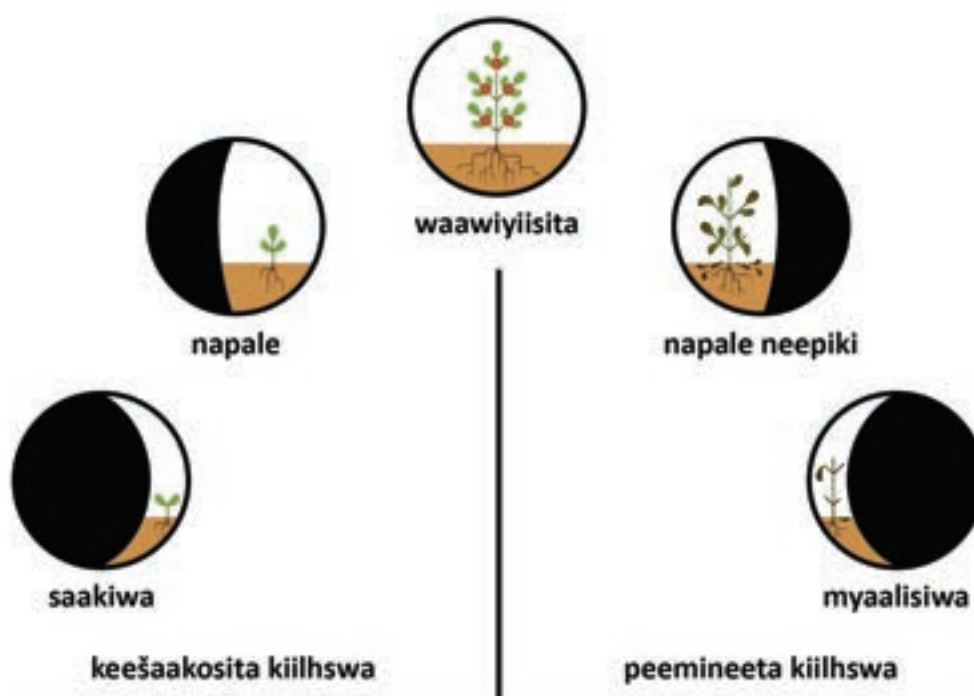
front and back cover photos by Doug Peconge

## kiilhsooki

For Myaamiaki 'Miami people' the moon helps us track the progress of a month. In Myaamia, we describe the moon growing like a plant during keešaakosita kiilhswa 'growing/waxing phases' and then dying away during peemineeta kiilhswa 'dying away/waning' phases.

Each month, the moon starts out as a thin sliver called saakiwa kiilhswa, which refers to the sprouting moon. For the next eleven evenings, the moon grows from saakiwa to waakhšinka kiilhswa 'crescent moon', napale kiilhswa 'half moon', naawi waawiyiisita 'almost full', and finally to waawiyiisita 'full moon'.

For the next fourteen days, you are more likely to see peemineeta kiilhswa 'waning phases' in the morning. Over this next period, kiilhswa will become napale neepiki 'half dead' and myaalisiwa kiilhswa 'seriously ill moon'. Eventually kiilhswa dies away and goes completely dark, and then sprouts again during the next moon.



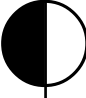
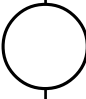
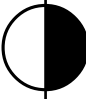


sihsipaahkwi weeštooyankwi  
'We made maple sugar!'

## waawiita kiilhsa 2026

### Lost Moon

photo by Karen L. Baldwin

eelaamini-kiišikahki	nkotakone	niišakone	nihsokone	niiyakone	yaalanokone	kaakaath-sokone
			1	2	3	4
			1/21	1/22	1/23	1/24
5 	6	7	8	9	10 Winter Gathering nooŝonke siipionki	11 Winter Gathering nooŝonke siipionki
1/25	1/26	1/27	1/28	1/29	1/30	1/31
12 	13	14	15	16	17	18
2/1	2/2	2/3	2/4	2/5	2/6	2/7
19 	20	21	22	23	24	25
2/8	2/9	2/10	2/11	2/12	2/13	2/14
26	27	28	29	30		
2/15	2/16	2/17	2/18	2/19		



alaakana seenseewinki  
'Bowl Game Bowls'

## mahkoonsa kiilhsa 2026

Young Bear Moon

photo by Doug Peconge

eelaamini-kiišikahki	nkotakone	niišakone	nihsokone	niiyakone	yaalanokone	kaakaath-sokone
					1 weehki-kihkatwe 2/20	2 wiiyaakiteeheelo weehki-kihkatwe nooŝonke siipionki 2/21
3 2/22	4 2/23	5 2/24	6 2/25	7 2/26	8 2/27	9 Winter Storytelling kiihkayonki 2/28
10 3/1	11 3/2	12 3/3	13 3/4	14 3/5	15 3/6	16 3/7
17 3/8	18 3/9	19 3/10	20 3/11	21 3/12	22 3/13	23 3/14
24 3/15	25 3/16	26 3/17	27 3/18	28 3/19	29 3/20	



**wiihsa kati iisileniyankwi ahkinki!**  
 'There's so much to do out here!'

## aanteekwa kiilhsa 2026

photo by Jonathan M. Fox

### Crow Moon

eelaamini-kiišikahki	nkotakone	niišakone	nihokone	niiyakone	yaalanokone	kaakaath-sokone
						1 3/21
2 3/22	3 3/23	4 3/24	5 3/25	6 3/26	7 3/27	8 3/28
9 3/29	10 3/30	11 3/31	12 4/1	13 4/2	14 4/3	15 4/4 Sprout About kiihkayonki
16 4/5	17 4/6	18 4/7	19 4/8	20 4/9	21 4/10	22 4/11 wiihsinitaawi neehi pakitahantaawi! 'Picnic and Play' noošonke siipionki
23 4/12	24	25	26	27	28	29
30 4/19	4/13	4/14	4/15	4/16	4/17	4/18 Myaamiaki Conference myaamia mihši-nipwaantiikaaninki



waapicahkihwaki keewahtekaayankwi  
'Shell Shakers'

## cecaahkwa kiilhsa 2026

### Sandhill Crane Moon

photo by Doug Peconge

eelaamini-kiišikahki	nkotakone	niišakone	nihsokone	niiyakone	yaalanokone	kaakaath-sokone
	1 4/20	2 4/21	3 4/22	4 4/23	5 4/24	6 4/25
7 4/26	8 4/27	9 4/28	10 4/29	11 4/30	12 5/1	13 5/2 Lacrosse into Spring kiihkayonki
14 5/3	15 5/4	16 5/5	17 5/6	18 5/7	19 5/8	20 5/9
21 5/10	22 5/11	23 5/12	24 5/13	25 5/14	26 5/15	27 5/16
28 5/17	29 5/18					



kiinte, taani iilaacimwiki?  
'Wait, what's that say?'

## wiihkoowia kiilhsua 2026

### Whippoorwill Moon

photo by Jonathan M. Fox

eelaamini-kiišikahki	nkotakone	niišakone	nihsokone	niiyakone	yaalanokone	kaakaath-sokone
		1	2	3	4	5
		5/19	5/20	5/21	5/22	5/23
6	7	8	9	10	11	12
5/24	5/25	5/26	5/27	5/28	5/29	5/30
13	14	15	16	17	18	19
5/31	6/1	6/2	6/3	6/4	6/5	6/6
20	21	22	23	24	25	26
6/7	6/8	6/9	6/10	6/11	6/12	6/13
27	28	29	30			
6/14	6/15	6/16	6/17			
	Eemamwiciki Programs Week nooŝonke siipionki					



moošaki meetaathsoopionkiši iyaawaaci  
 myaamiaki  
 'Myaamia people have always gone to  
 Washington, D.C.'

## paaphsaahka niipinwiki 2026

### Mid-summer Moon

photo by Doug Peconge

eelaamini- kiišikahki	nkotakone	niišakone	nihsokone	niiyakone	yaalanokone	kaakaath- sokone
				1	2	3
				6/18	6/19	6/20
4 pahsaahkaahkanka 6/21	5 6/22	6 6/23	7 6/24	8 Family Day noošonke siipionki 6/25	9 Cultural Education Day noošonke siipionki 6/26	10 Miami Nation General Council & Myaamia Mid-Summer Gathering noošonke siipionki 6/27
11 6/28	12 6/29	13 6/30	14 2001 Myaamia Project Established 7/1	15 7/2	16 7/3	17 7/4
18 7/5	19 7/6	20 7/7	21 7/8	22 7/9	23 7/10	24 7/11
25 7/12	26 Eemamwiciki Programs Week kiihkayonki 7/13	27 7/14	28 7/15	29 7/16		



maamawi aanciniikiaanki  
'Growing up together'

## kiišiinkwia kiihswa 2026

### Green Corn Moon

photo by Jonathan M. Fox

eelaamini-kiišikahki	nkotakone	niišakone	nih sokone	niiyakone	yaalanokone	kaakaath-sokone
					1 Kiišiinkwia Kiihswa Dinner kiihkayonki 7/17	2 7/18
3 7/19	4 7/20	5 7/21	6 7/22	7 7/23	8 7/24	9 7/25
10 7/26	11 7/27	12 7/28	13 7/29	14 7/30	15 7/31	16 8/1
17 8/2	18 8/3	19 8/4	20 8/5	21 8/6	22 8/7	23 8/8 SummerFest noošonke siipionki
24 8/9	25 8/10	26 8/11	27 8/12	28 8/13	29 8/14	30 8/15 Washington Cultural Workshop Kennewick, WA



myaamiaki neepwaaminciki eelwasihtooaaci  
'Myaamia students having fun'

## mihšiiwia kiilhsua 2026

photo by Karen L. Baldwin

### Elk Moon

eelaamini-kiišikahki	nkotakone	niišakone	nihsokone	niiyakone	yaalanokone	kaakaath-sokone
1	2	3	4	5	6	7
8/16	8/17	8/18	8/19	8/20	8/21	8/22
8	9	10	11	12	13	14
8/23	8/24	8/25	8/26	8/27	8/28	8/29
15	16	17	18	19	20	21
8/30	8/31	9/1	9/2	9/3	9/4	9/5
22	23	24	25	26	27	28
9/6	9/7	9/8	9/9	9/10	9/11	9/12
29						
9/13						

Indiana Fall Gathering  
kiihkayonki



myaamia kiilhsooki nipwaataawi!  
'Let's learn about the Myaamia calendar!'

## šaašaakayolia kiilhswa 2026

### Grass Burning Moon

photo by Jonathan M. Fox

eelaamini-kiišikahki	nkotakone	niišakone	nihsokone	niiyakone	yaalanokone	kaakaath-sokone
	1	2	3	4	5	6
	9/14	9/15	9/16	9/17	9/18	9/19
7	8	9	10	11	12	13
9/20	9/21	9/22	9/23	9/24	9/25	9/26
14	15	16	17	18	19	20
9/27	9/28	9/29	9/30	10/1	10/2	10/3
21	22	23	24	25	26	27
10/4	10/5	10/6	10/7	10/8	10/9	10/10
28	29	30				
10/11	10/12	10/13				



**kiihkisamaani**  
'Drawing by burning'

## kiiyolia kiihswa 2026

### Smoky Burning Moon

photo by Jonathan M. Fox

eelaamini-kiišikahki	nkotakone	niišakone	nih sokone	niiyakone	yaalanokone	kaakaath-sokone
			1	2	3	4 Sasquash Seed Swap kiihkayonki
			10/14	10/15	10/16	10/17
5	6	7 1846 Removal Boats Arrive at Bloody Island, IL	8	9	10	11
10/18	10/19	10/20	10/21	10/22	10/23	10/24
12	13	14	15	16	17	18
10/25	10/26	10/27	10/28	10/29	10/30	10/31
19 1846 Removal Boats Arrive at Westport Landing, MO	20	21	22 1846 Arrival at Osage River Agency, KS	23	24	25
11/1	11/2	11/3	11/4	11/5	11/6	11/7
26	27	28	29			
11/8	11/9	11/10	11/11			



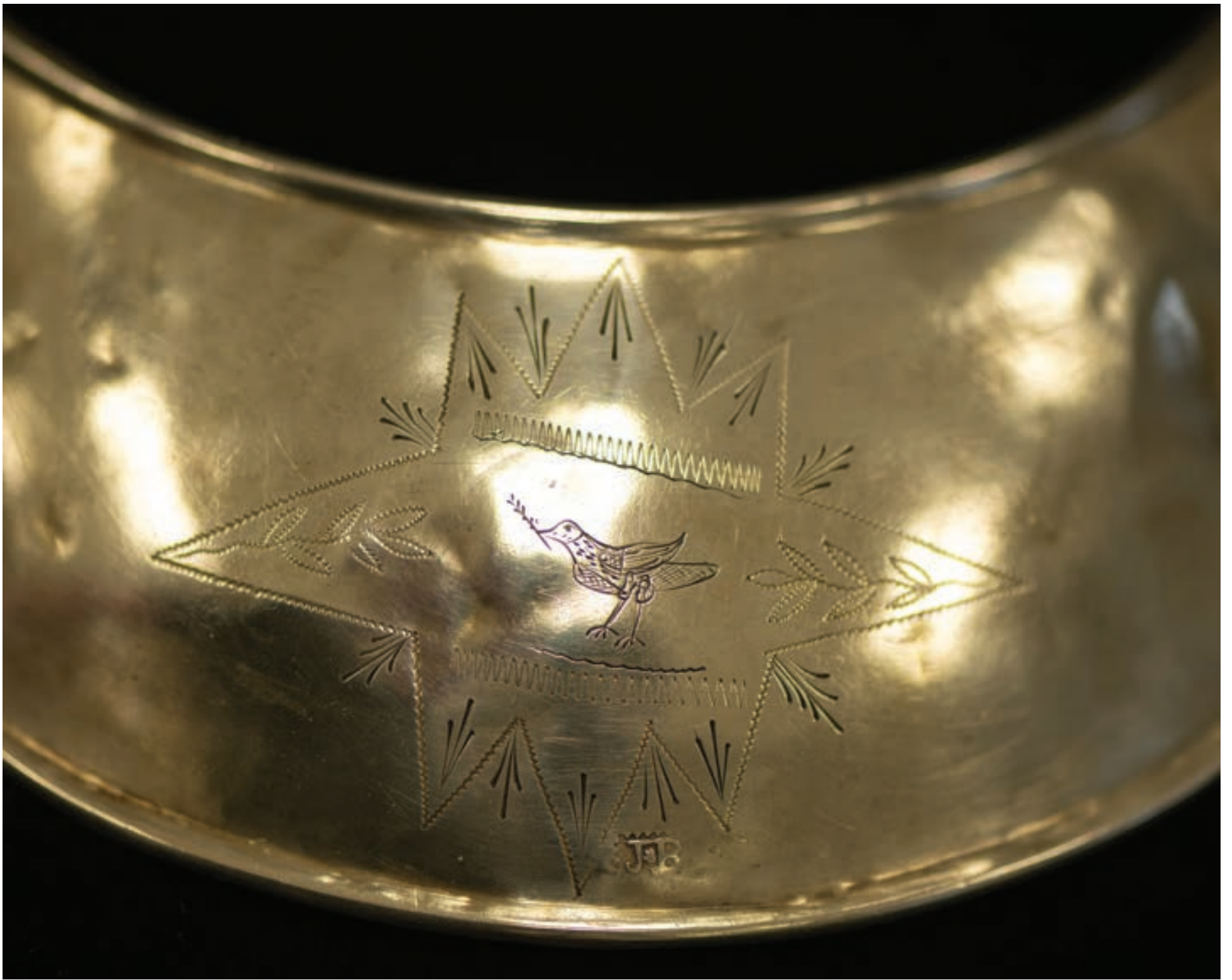
**oowaaha myaamionki  
maawipyaayankwi eeweemankwiki**  
'Our family gathers on Myaamia land'

## ayaapeensa kiilhsua 2026

### Young Buck Moon

photo by Karen L. Baldwin

eelaamini- kiišikahki	nkotakone	niišakone	nihsokone	niiyakone	yaalanokone	kaakaath- sokone
				1	2	3 Beaver Week kiihkayonki
				11/12	11/13	11/14
4	5	6	7	8	9	10
11/15	11/16	11/17	11/18	11/19	11/20	11/21
11	12	13	14	15	16	17
11/22	11/23	11/24	11/25	11/26	11/27	11/28
18	19	20	21	22	23	24
11/29	11/30	12/1	12/2	12/3	12/4	12/5
25	26	27	28	29	30	
12/6	12/7	12/8	12/9	12/10	12/11	



peehki waakalinihkiinki  
'Beautiful silver gorget'

## ayaapia kiilhsa 2026

### Buck Moon

photo by Doug Peconge

eelaamini-kiišikahki	nkotakone	niišakone	nihsokone	niiyakone	yaalanokone	kaakaath-sokone
						1 12/12
2 12/13	3 12/14	4 12/15	5 12/16	6 12/17	7 12/18	8 12/19
9 12/20	10 12/21	11 12/22	12 12/23	13 12/24	14 12/25	15 12/26
16 12/27	17 12/28	18 12/29	19 12/30	20 12/31	21 1/1	22 1/2
23 1/3	24 1/4	25 1/5	26 1/6	27 1/7	28 1/8	29 1/9



ceeki kiikoo kati toopeeliyankwi  
 'Together, we can do anything'

## mahkwa kiilhsa 2027

### Bear Moon

photo by Doug Peconge

eelaamini-kiišikahki	nkotakone	niišakone	nihsokone	niiyakone	yaalanokone	kaakaath-sokone
1 1/10	2 1/11	3 1/12	4 1/13	5 1/14	6 1/15	7 1/16
8 1/17	9 1/18 Mihšihkinaahkwa Day	10 1/19	11 1/20	12 1/21	13 1/22	14 1/23
15 1/24	16 1/25	17 1/26	18 1/27	19 1/28	20 1/29 Winter Gathering nooŝonke siipionki	21 1/30 Winter Gathering nooŝonke siipionki
22 1/31	23 2/1	24 2/2	25 2/3	26 2/4	27 2/5	28 2/6
29 2/7	30 2/8					

# mihši-neewe

This calendar is a culmination of much work made possible by tremendous support from several individuals and organizations. We would like to express our thanks to the Miami Nation and Miami University for supporting our efforts through the Myaamia Center at Miami University. A list of all the individuals who have worked on this calendar over the years can be found at [MiamiOH.edu/myaamiacenter](http://MiamiOH.edu/myaamiacenter).

photo by Jonathan M. Fox





©Miami Tribe of Oklahoma

